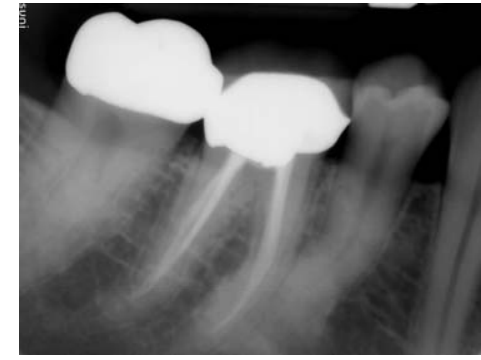
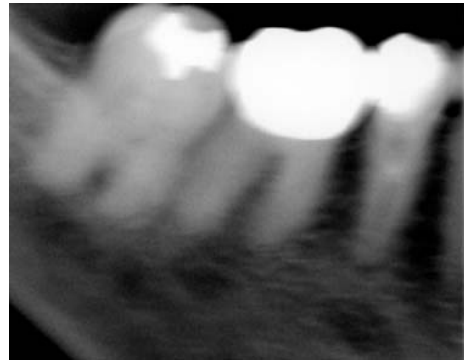


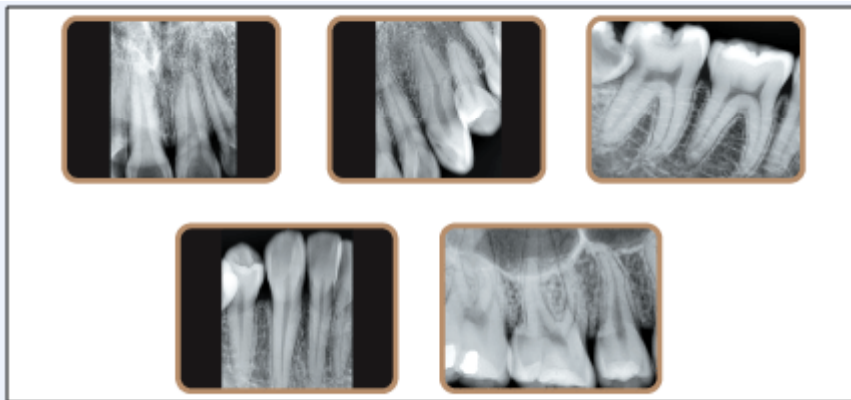
BLURRINESS

- Could cause by movement from X-ray head
- Compress the image by using BINNED in CCD does the trick
- Ambient light or direct sun light
- Some just have certain degree of blurriness depends on the machine being calibrated
- Increase integration time, especially with the AC head machine

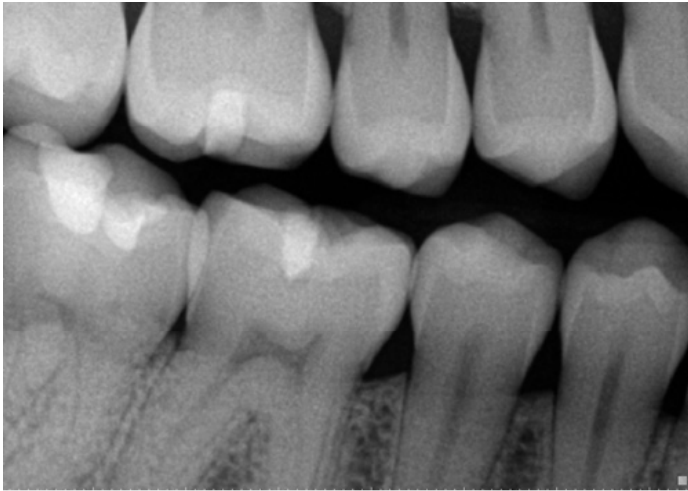


Quality Customers Want

- Could cause by movement from X-ray head
- Compress the image by using BINNED in CCD does the trick
- Ambient light or direct sun light
- Some just have certain degree of blurriness depends on the machine being calibrated
- Increase integration time, especially with the AC head machine

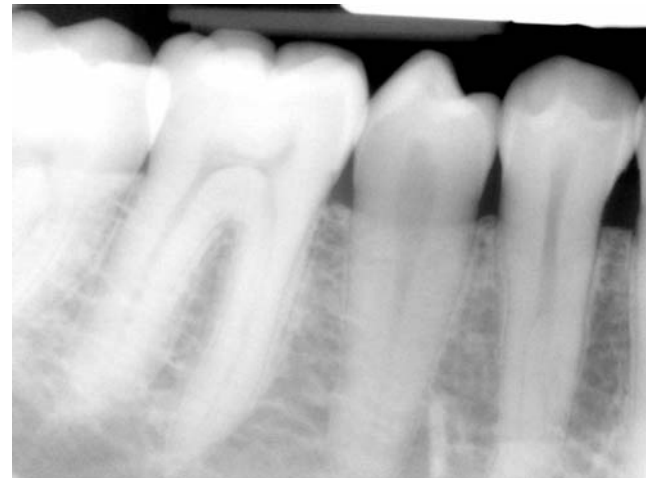
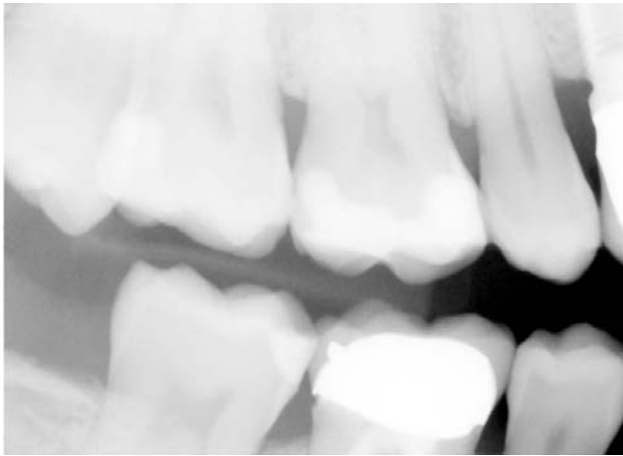


Quality Customers Want



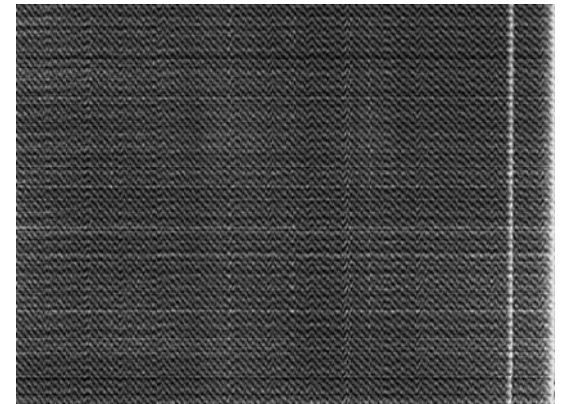
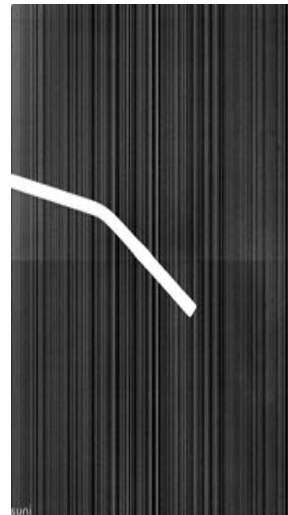
LIGHT, WASHED OUT, GRAINY

- Increase exposure – Especially on Belray machine or some machine with low mA
- Change image return type to BINNED if CCD sensor
- Apply filter – Lowering the brightness, increase contrast and combine with gamma usually gives best result.
- Increase contrast or use the SMOOTH operation



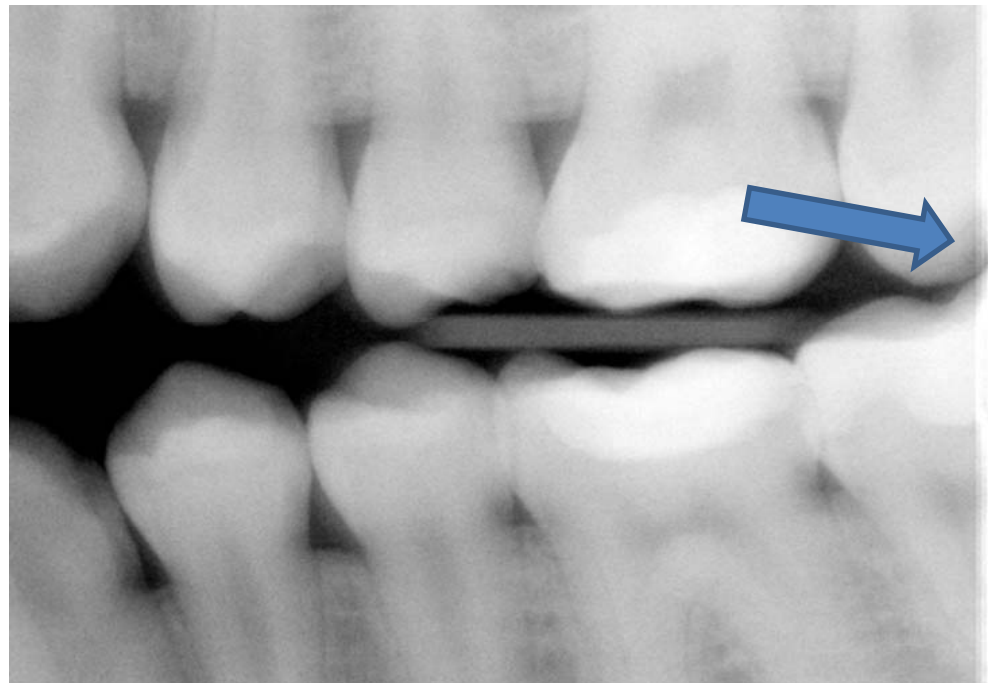
BURNED-OUT, OVER EXPOSED

- Over exposed, lower the exposure



STAIR STEPPING

- Mostly cause by AC head machine – they usually take longer for radiation to penetrate, therefore, increase integration time until no fuzziness appear
- For older 1800 box, apply stair stepping fixed .mcs file



DISTORTED

- So far, this hasn't happen with SuniRay sensor
- For CCD with 1800, it happens on BINNED setting with certain(type) X-ray machine



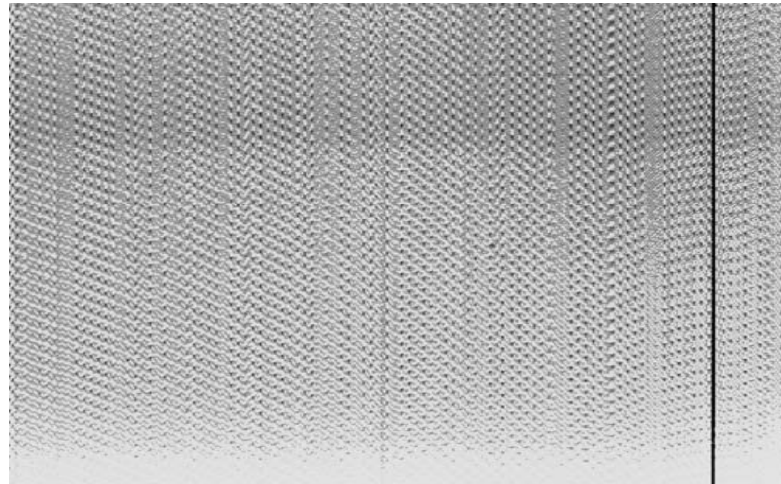
WHITE IMAGE

- Cause by over exposed, try to lower it
- Insufficient power for USB port, takes longer time to process, then result in white image
- Auto triggering



STITCH PATTERN

- Over exposed on some SuniRay sensors



NOISY IMAGE

- Typically, it causes by under exposed or the cone too far from the sensor.



WRONG SENSOR FILE



IMAGE COMPARISON

Before

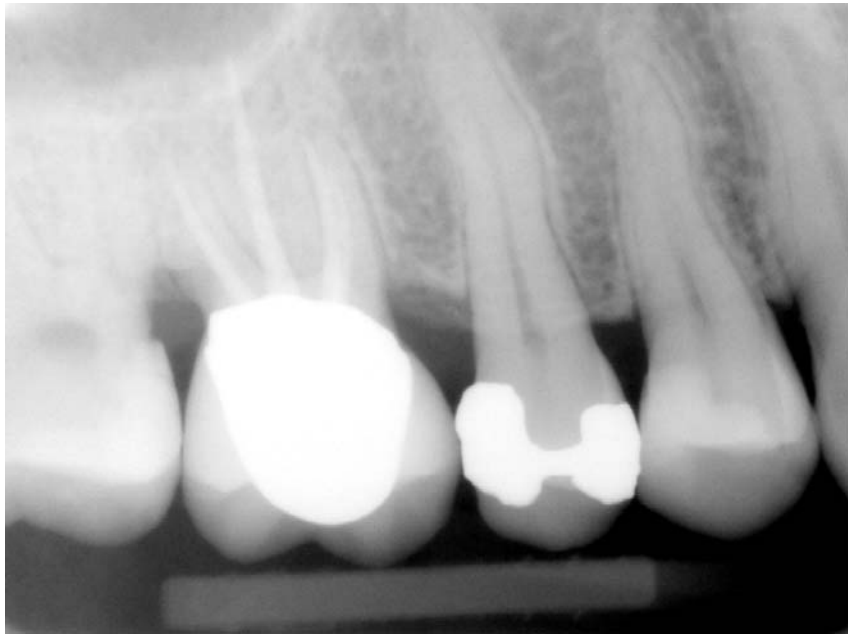


After



IMAGE COMPARISON2

Before



After



SAMPLE IMAGES

