



Veraview IC5 HD  
High Definition, Digital Imaging Excellence

 J.MORITA MFG.CORP.

Thinking ahead. Focused on life.

  
MORITA



Veraview XCS

Thinking ahead.



Focused on life.



## Features at a Glance

### Industry Best Exposure Time\*

Extremely fast 5.5 second panoramic with significantly lower dosage

### High Definition

New and improved definition of 96  $\mu$ m (10 second scan) for the ultimate high definition image

### Class-leading Clarity

DDAE (Digital Direct Auto Exposure) and AIE (Auto Image Enhancer) functions provide sharp and clear images

### Quick and Easy Patient Positioning

With integrated triple laser beam alignment

### Fully Automatic Simplified Operation

Simply select the desired program: Panoramic, TMJ, or PEDO. In addition, no parameter setting is required

### Digital Technology

No film or film development is required

### Low Power Consumption, Lightweight and Compact Design

\* As of January 2010



## Select From Two Levels of Speed and Resolution

Depending on the diagnostic need, you can take a quick, 5.5 second panoramic for the lowest dosage, or a 10 second scan for the ultimate, high resolution image.



High Speed: only 5.5 seconds, 192  $\mu\text{m}$ , 1/6\*\* X-Ray exposure

### High Speed

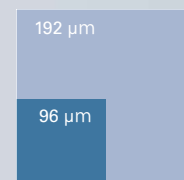
With an industry best exposure time of 5.5 seconds, the Veraview IC5 is not only significantly faster than conventional film-based panoramic systems, but also requires much less radiation.



High Definition: 10 second exposure, 96  $\mu\text{m}$

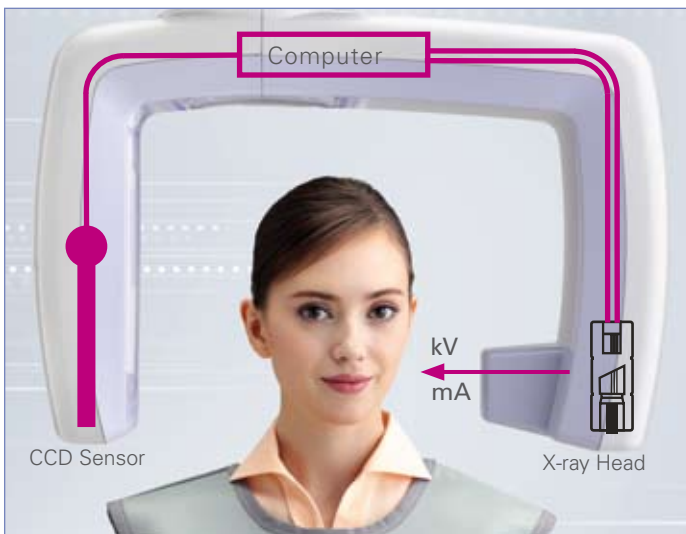
### High Definition

Pixel size has been reduced to 96  $\mu\text{m}$  so it produces superior images of an even higher resolution.



High Speed: 5.5 seconds (192  $\mu\text{m}$ )  
High Definition: 10 seconds (96  $\mu\text{m}$ )

\*\* Compared with Morita's Veraviewepocs using film, normal speed radiographic mode (16 seconds, 75 kV and 9 mA)



### Digital Direct Auto Exposure (DDAE)

Digital Direct Auto Exposure automatically sets kV and mA and provides continuous, real-time adjustment of the parameters throughout the pass to compensate for varying densities. This improves the dynamic range, and along with Auto Image Enhancer, results in exceptionally clear images with the best possible contrast and even density. The automatic exposure level can be adjusted to meet your individual requirements.

*There is no need to set tube voltage or current. Auto Exposure (DDAE) provides the optimum exposure conditions with a maximum tube current of 7.5 mA.*

## High Quality Images

The combination of DDAE (Digital Direct Auto Exposure) and AIE (Auto Image Enhancer) produces high quality images with optimum contrast and uniform density.



*Auto Image Enhancer Comparison*



### Auto Image Enhancer (AIE)

AIE is a special software function that optimizes density throughout an entire image and highlights the brightness level of detailed areas, to create images with an extremely high degree of clarity. DDAE and AIE perform a logarithmic conversion to produce the highest quality image possible.

# Quick and Easy Patient Positioning and Operation

Power-assisted lift makes patient positioning easier than ever. No need to set tube voltage and current.



## Power-Assisted Movement

The motor assisted lift system with slow-start and slow-stop functions provides easy and accurate height adjustment.

The overload detector will automatically halt the elevation for patient safety.

## Fully Automatic X-Ray Loading Factor

X-ray exposures require no kV or mA parameter settings. Simply select the desired program: Panorama, TMJ, or PEDO.

## Low Power Consumption, Lightweight, and Compact

Power Consumption: 0.85 kVA (50% reduction)\*

Total Weight: 110 kg (242.5 lb.) (40% reduction)\*

Compact: 0.86 m<sup>2</sup> (8.7 sq. ft.) installation area (30% reduction)\*

\*Compared to Morita's Veraviewepocs



Easy to use control panel



## Triple Laser Beam for Easy Positioning

The Veraview IC5 utilizes three lasers that align the Frankfurt plane, the mid-sagittal plane, and the image layer, making patient positioning very easy.

## Direct Current for Optimal Efficiency and Safety

Direct current produces high energy X-rays, thereby reducing the soft X-rays which are absorbed by the human body during the exposure. Also, the primary slit of Veraview IC5 is very narrow. The image has a wide image layer, providing exceptional detail.



Manually adjustable bite block/chin rest for patient positioning.

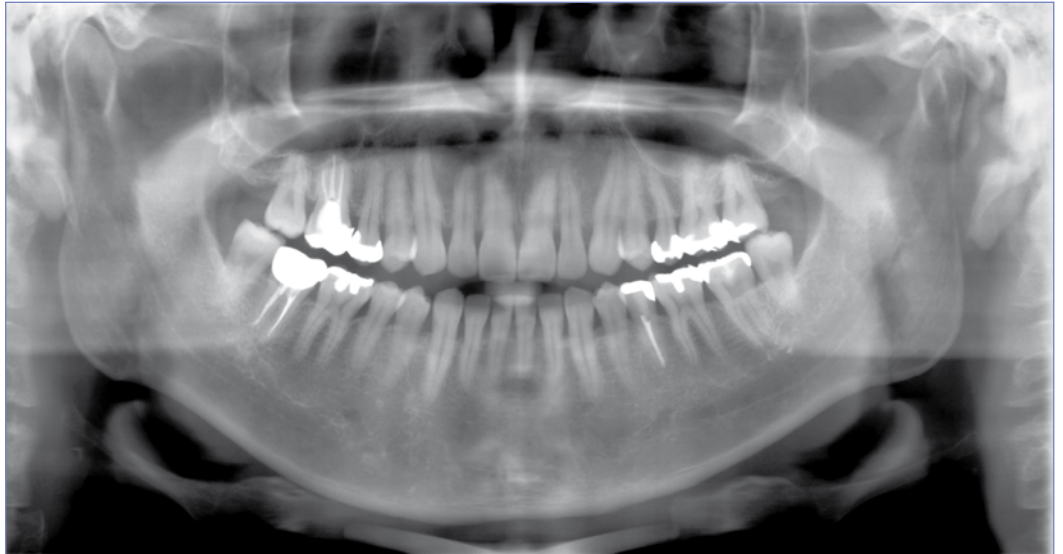
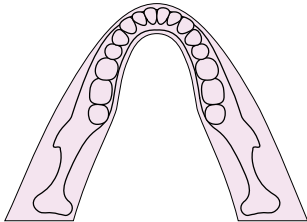


Chin rest cup is available for patients with a TMJ disorder.



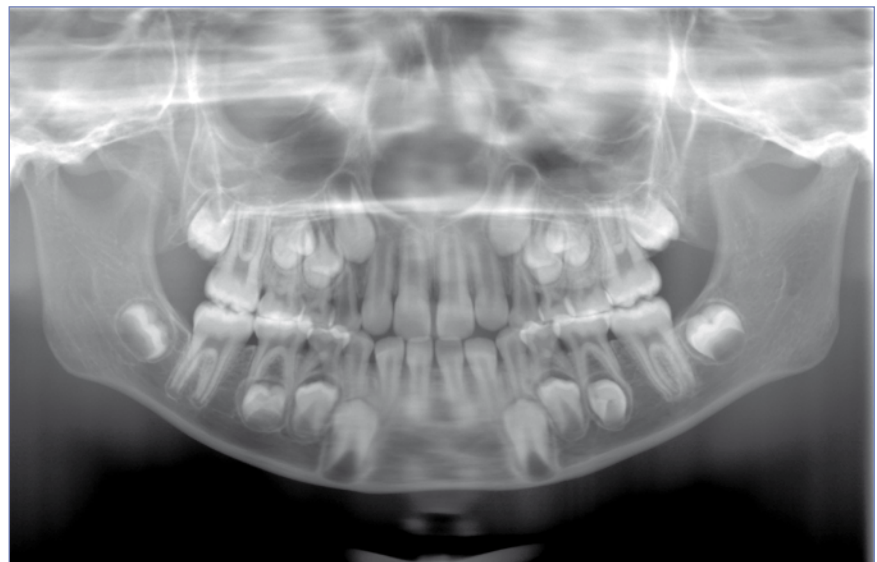
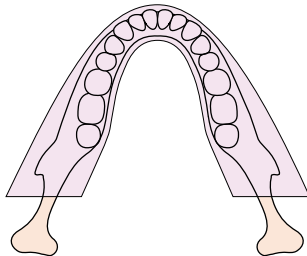
### Standard Panoramic

Clear, sharp images with a wide image layer. The thick, specifically designed image layer accommodates all possible variations of dental arch shapes and sizes to produce extremely clear and sharp images. (5.5 or 10 second scan)



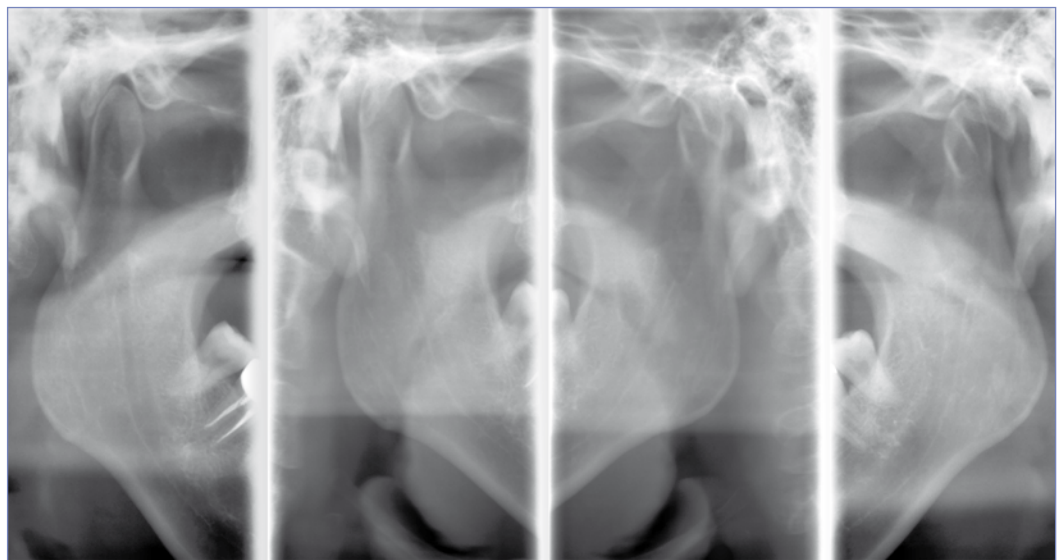
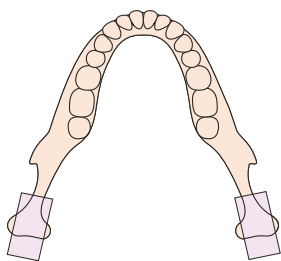
### Pedodontic Panoramic at Reduced Radiation

For examinations of children or people with small jaws, the rotation range of the arm is diminished, thereby further reducing radiation exposure. (4.8 second scan)



### TMJ Quadruple Exposures: for Open and Closed Condyle Views

Four separate shots of condyle fit onto one image. In each case, two sets of rotation for left and right condyle head for open and closed condition.







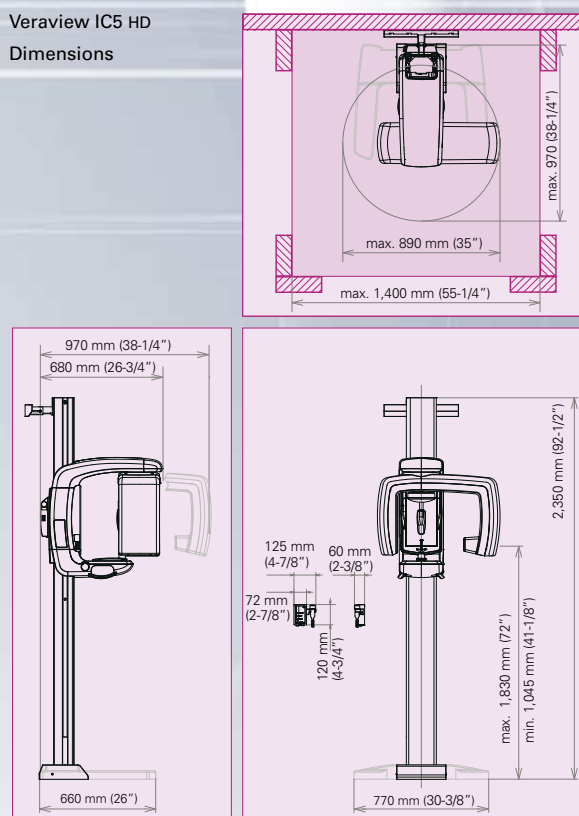
Self-standing base is available as an option.

## Specifications and Dimensions

### Veraview IC5 HD Specifications

Trade name	Veraview IC5
Model	XDP1
Input voltage	AC 100V/115V/120V (EX-1) 220V/230V/240V (EX-2)
X-ray head (DC Inverter)	
Power consumption	0.85 kVA
Operating tube voltage	60–70 kV Automatic control
Operating tube current	1–7.5 mA Automatic control
Filament	Preheated
Rectification	Direct current
Cooling	Oil cooling
Tube focal area	0.5 mm
Exposure time	High Speed mode: 5.5 sec. / 192 $\mu$ m High Definition mode: 10 sec. / 96 $\mu$ m
Light beams	Mid-sagittal plane, Frankfurt plane Image layer light beam
Emission switch	Deadman type
Outer dimensions	
Body dimension	W 890 x D 970 x H 2,350 mm (W 35" x D 38 1/4" x H 92 1/2")
Control box dimension	W 125 x D 60 x H 120 mm (W 4 7/8" x D 2 3/8" x H 4 3/4")
Required installation area	0.86 m <sup>2</sup> (8.7 sq. ft.)
Weight	Approx. 110 kg (242.5 lb.)

### Veraview IC5 HD Dimensions



### Thinking ahead. Focused on life.

In 1916, Junichi Morita started to import products of the leading dental equipment manufacturers into Japan, where demands for modern dentistry were growing. His venturesome attempts of supplying selected products for oral healthcare has grown steadily by receiving valuable support and guidance from the dental profession. His enterprising spirit lives through the decades, and all Morita Group Companies join in continuing to pursue marketing, distribution and services, as well as R&D and manufacturing, in collaboration with world leaders in healthcare products and research organizations.

Diagnostic/Imaging Equipment

Treatment Units

Instruments

Laser Equipment

Laboratory Devices

Educational and Training Systems

Auxiliaries

Distributed by

**J. MORITA USA, INC.**

9 Mason, Irvine, CA 92618 U.S.A.

Toll Free: (800) 831-3222, Fax: (949) 465-1095, [www.morita.com/usa](http://www.morita.com/usa)

**J. MORITA EUROPE GMBH**

Justus-von-Liebig-Strasse 27A, D-63128 Dietzenbach, Germany

Tel: +49-6074-836-0, Fax: +49-6074-836-299, [www.morita.com/europe](http://www.morita.com/europe)

**J. MORITA CORPORATION AUSTRALIA & NEW ZEALAND**

247 Coward Street, Suite 2.05, Mascot NSW 2020, Australia

Tel: +61 2 9667 3555, Fax: +61 2 9667 3577, [www.morita.com/anz](http://www.morita.com/anz)

**J. MORITA MIDDLE EAST**

Saraya Al Wessam Bldg., Tower A, Appt. 902

Cross roads Tag Roasaa & Abu Heif, Saba Pacha, Alexandria, Egypt

Tel: 203 58 222 94, Fax: 203 58 222 96, [www.jmoritamiddleeast.com](http://www.jmoritamiddleeast.com)

**J. MORITA CORPORATION**

33-18, 3-Chome, Tarumi-cho Suita City, Osaka, 564-8650 Japan

Tel: +81-6-6380-2525, Fax: +81-6-6380-0585

[www.morita.com/asia](http://www.morita.com/asia)

**J. MORITA MFG. CORP.**

680 Higashihama Minami-cho, Fushimi-ku, Kyoto, 612-8533 Japan

Tel: +81-75-611-2141, Fax: +81-75-622-4595, [www.morita.com/dental](http://www.morita.com/dental)